

**Exploring for High Grade Gold and
KSM style porphyry Copper – Gold
Deposits in BC's Golden Triangle**



CSE: GOR

Goldrea.com

FORWARD LOOKING STATEMENTS



Investors are cautioned that, except for statements of historical fact, certain information contained in this document includes “forward-looking information”, with respect to a performance expectation for Goldrea Resources Corp. Such forward-looking statements are based on current expectations, estimates and projections formulated using assumptions believed to be reasonable and involving a number of risks and uncertainties which could cause actual results to differ materially from those anticipated.

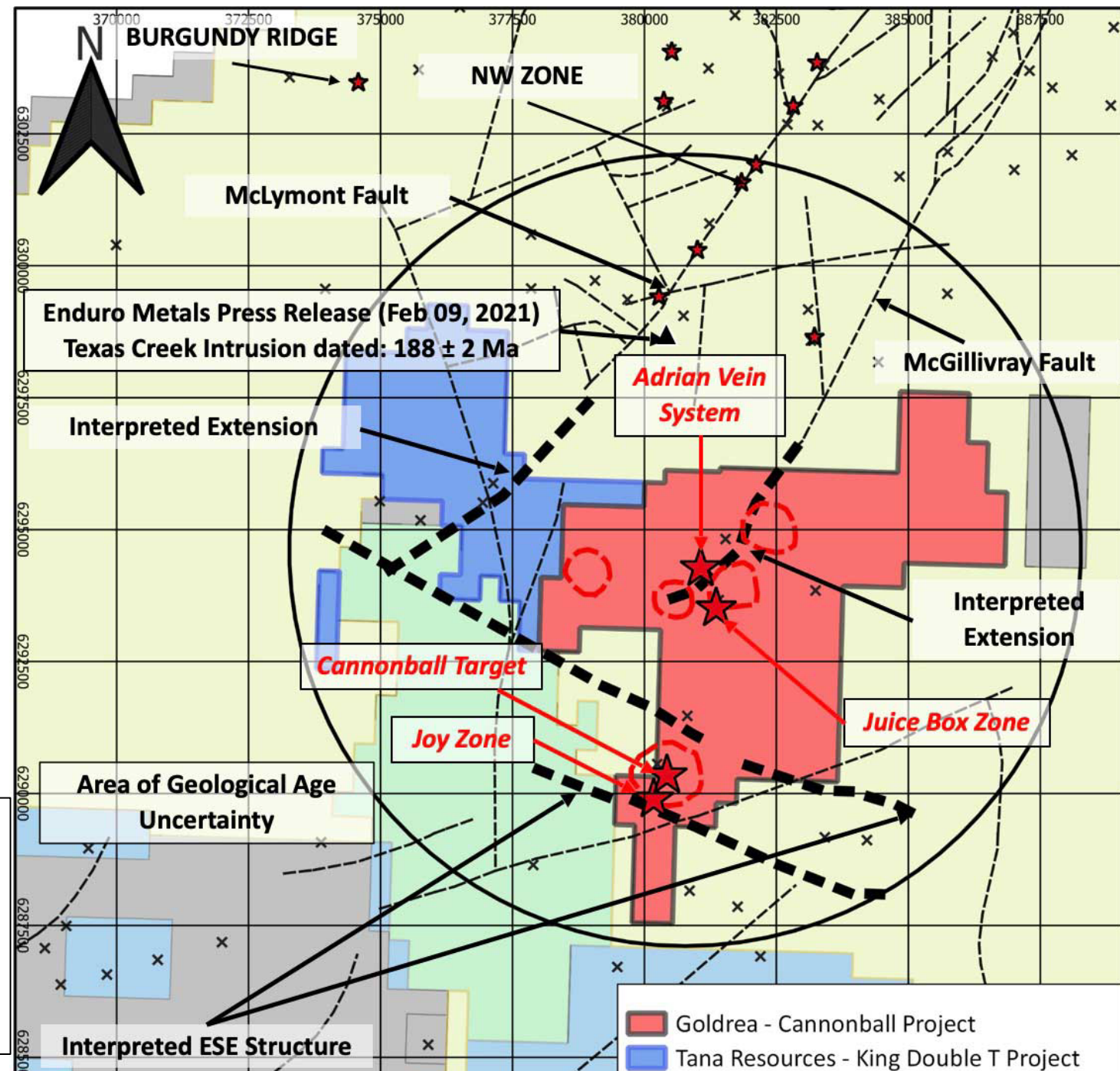
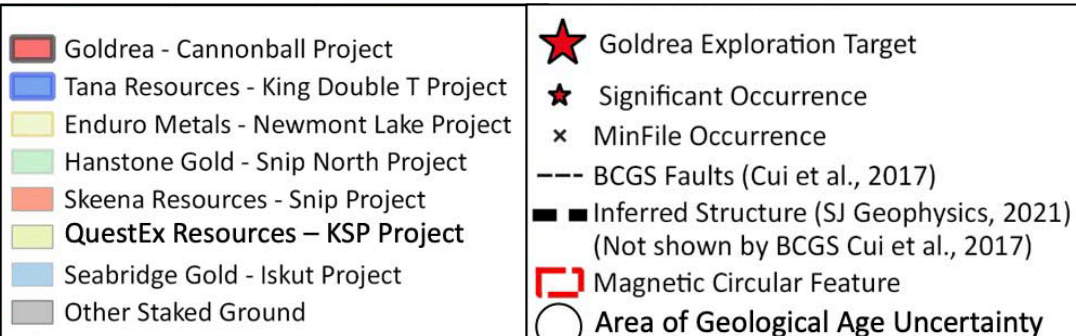
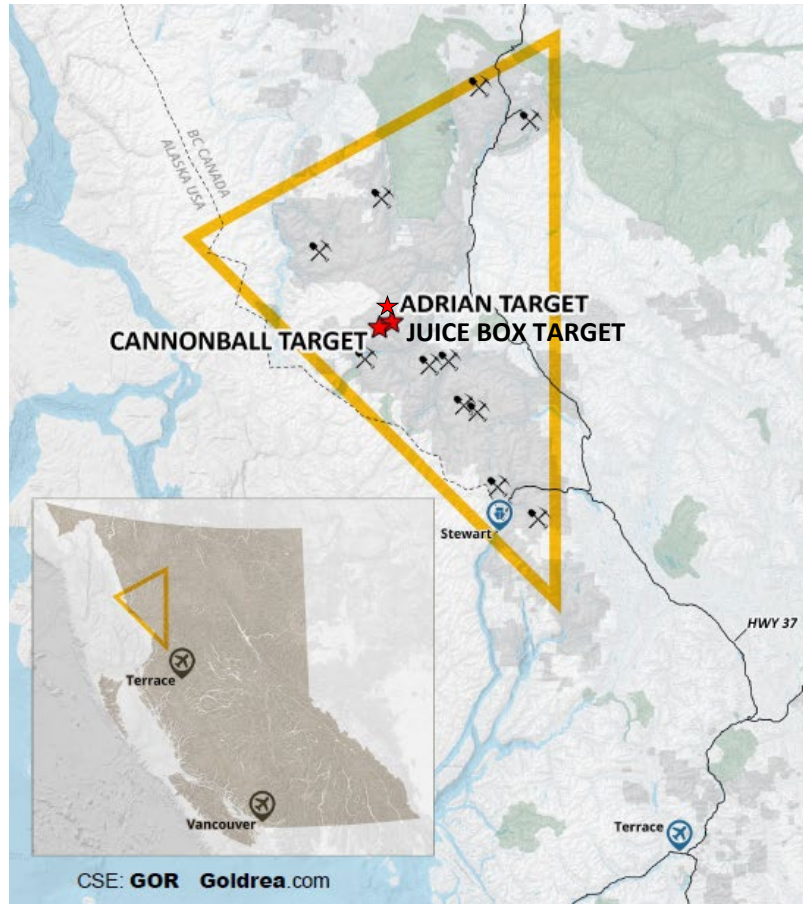
Such factors include, without limitation, fluctuations in foreign exchange markets, the price of commodities in both the cash market and futures market, changes in legislation, taxation, controls and regulations of national and local governments and political and economic developments in Canada and other countries where Goldrea Resources Corp. carries-out or may carry-out business in the future, the availability of future business opportunities and the ability to successfully integrate acquisitions or operational difficulties related to technical activities of mining and reclamation, the speculative nature of exploration and development of mineral deposits located, including risks in obtaining necessary licenses and permits, reducing the quantity or grade of reserves, adverse changes in credit ratings, and the challenge of title.

The Company does not undertake an obligation to update publicly or revise any forward-looking statements or information, whether as a result of new information, future events or otherwise, unless so required by applicable securities laws.

Carl von Einsiedel, an officer of Goldrea Resources Corp., is a registered professional geoscientist as defined by National Instrument 43-101. Mr. von Einsiedel has reviewed and approved the technical portion of this corporate presentation.



Cannonball Project Property Map



EXPLORATION STRATEGY

- **Multi-year exploration and drill permits granted at Cannonball Property**
- **Proactive consultation with First Nations**
- **Geologic team completing helicopter access surface geologic exploration, field mapping, sampling and follow up on priority geophysical targets**
- **Data compilation and verification at Adrian**
- **Deep penetrating IP survey to test sulphide bearing systems at Juice Box and Adrian targets**
- **First priority targets include several porphyry-style geophysical targets coincident with anomalous copper and gold in rock samples**



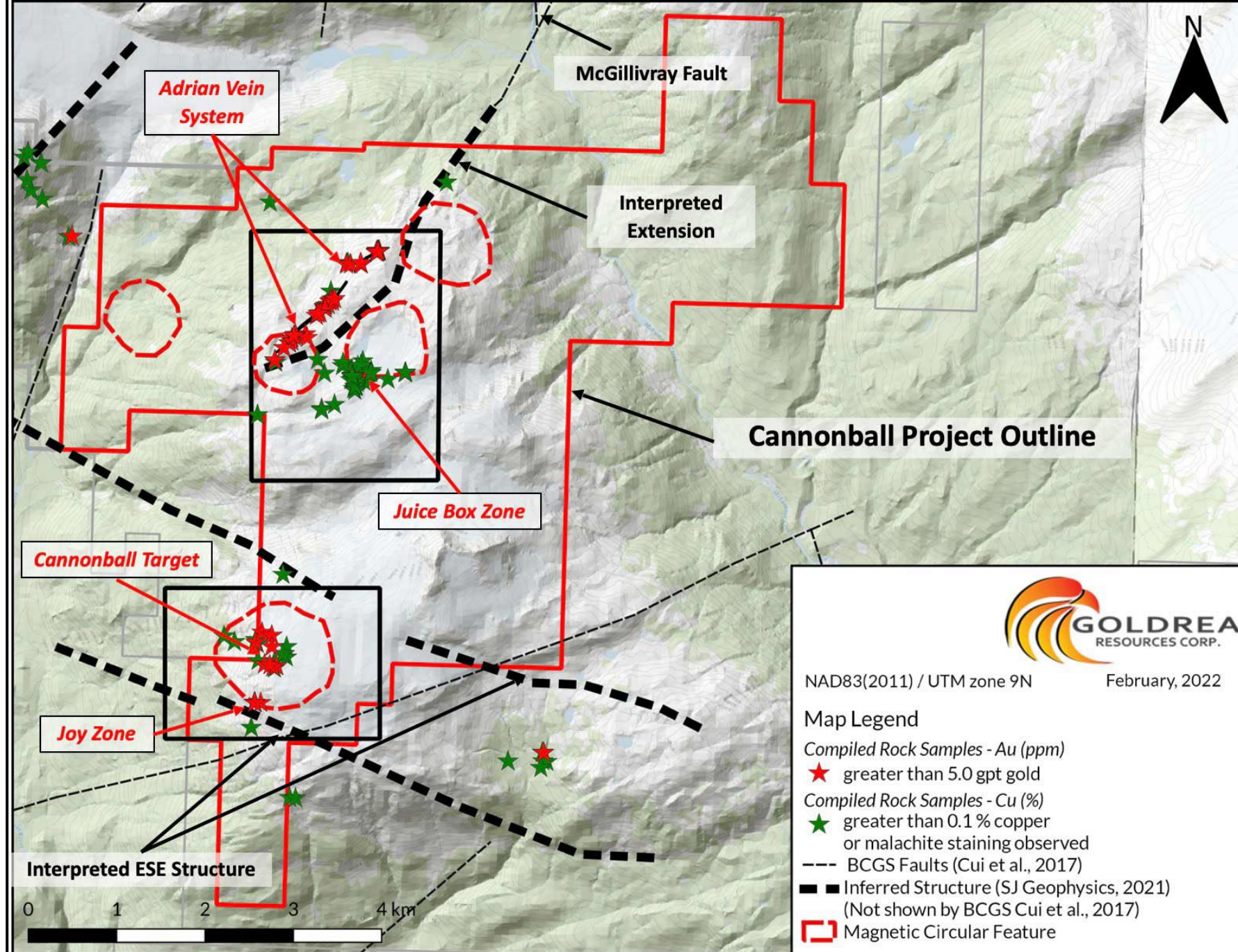
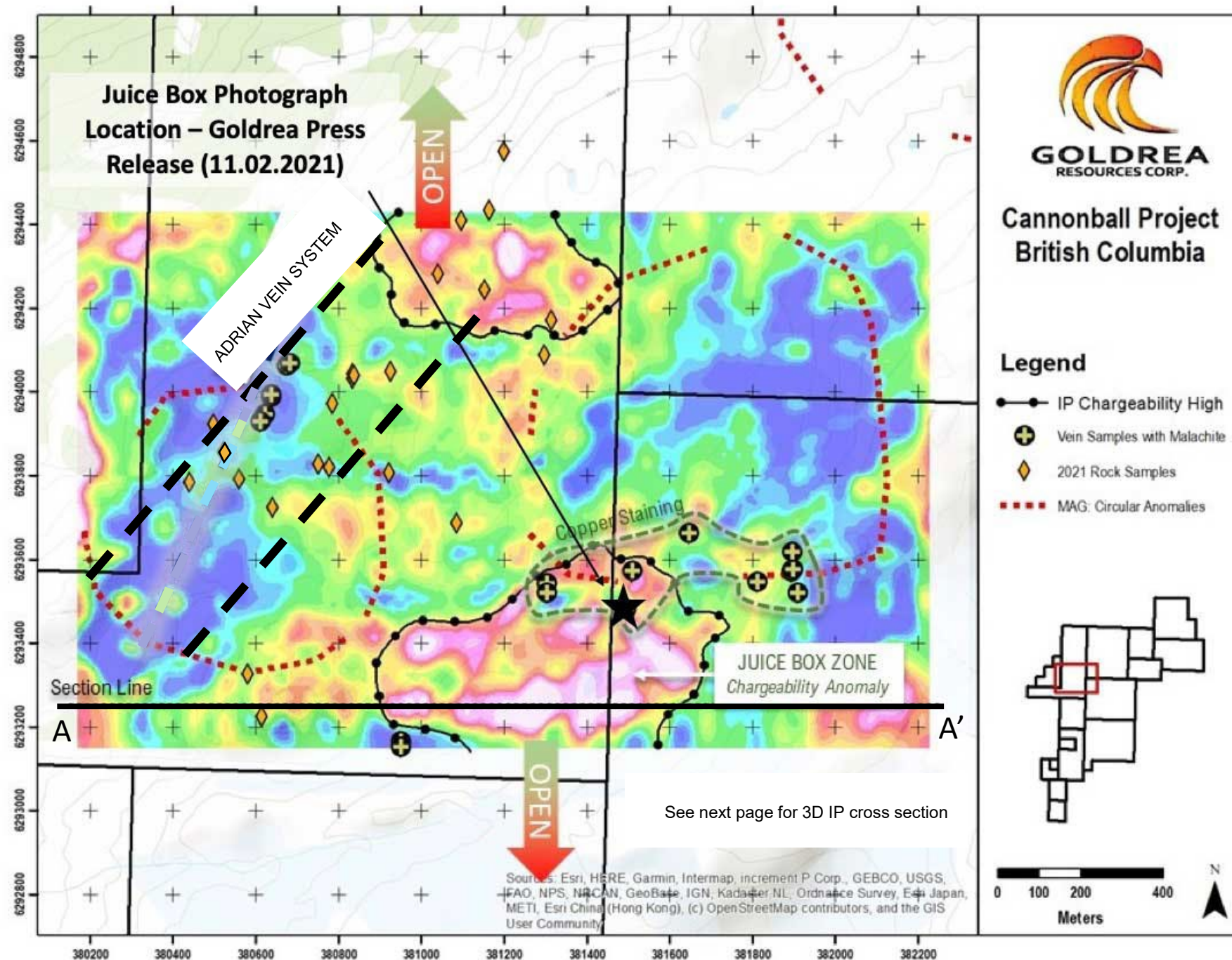
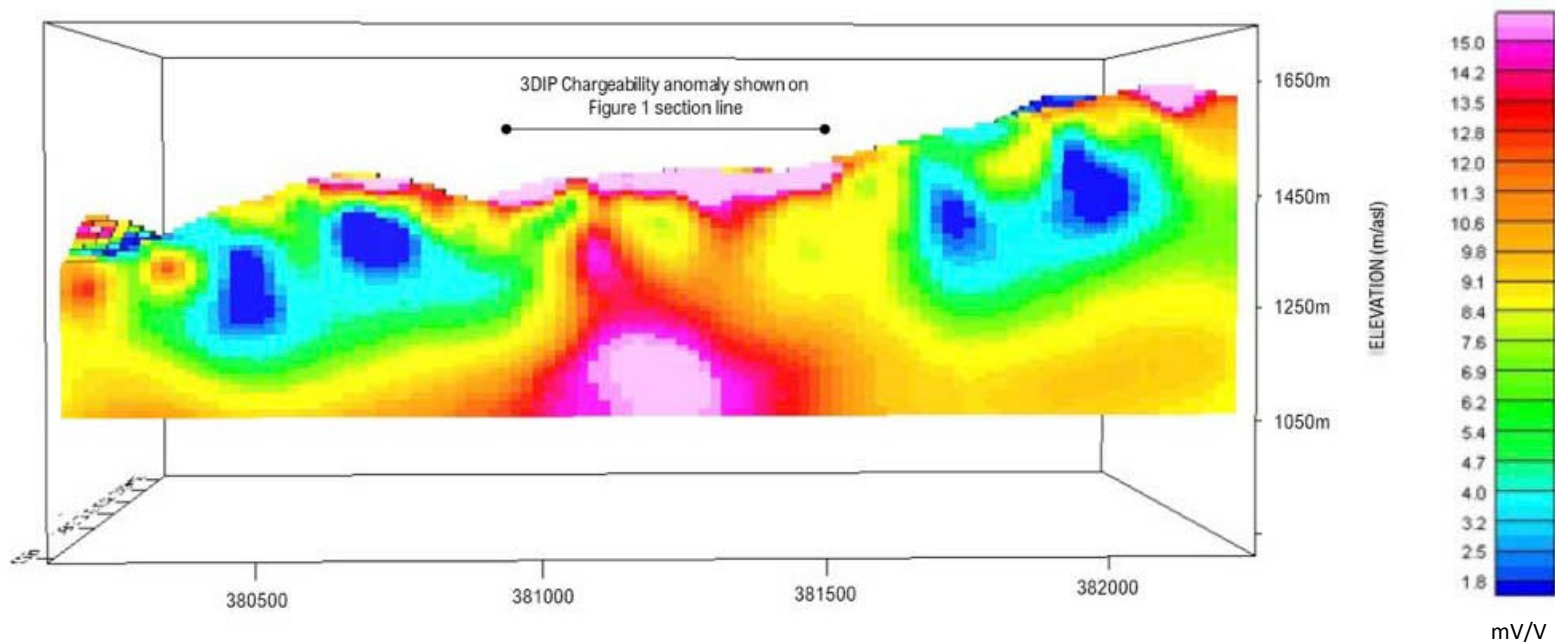


FIGURE 4: CANNONBALL PROJECT - EXPLORATION TARGET MAP



Juice Box Zone 3D IP Cross Section A to A' - 2021 Survey



Map Legend

Magnetic Circular Feature

Adrian Vein System Historic Mapped Extent

Compiled Rock Samples - Au (ppm)

greater than 5.0 gpt gold

Compiled Rock Samples - Cu (%)

greater than 0.1 % copper

2021 Completed 3D IP Lines

2022 Proposed 3D IP Lines

Historic Drill Collar Locations

Goldrea - Cannonball Property Boundary

Inferred Structure (SJ Geophysics, 2021)
(Not shown by BCGS Cui et al., 2017)



GOLDREA
RESOURCES CORP.

Cannonball Project
British Columbia

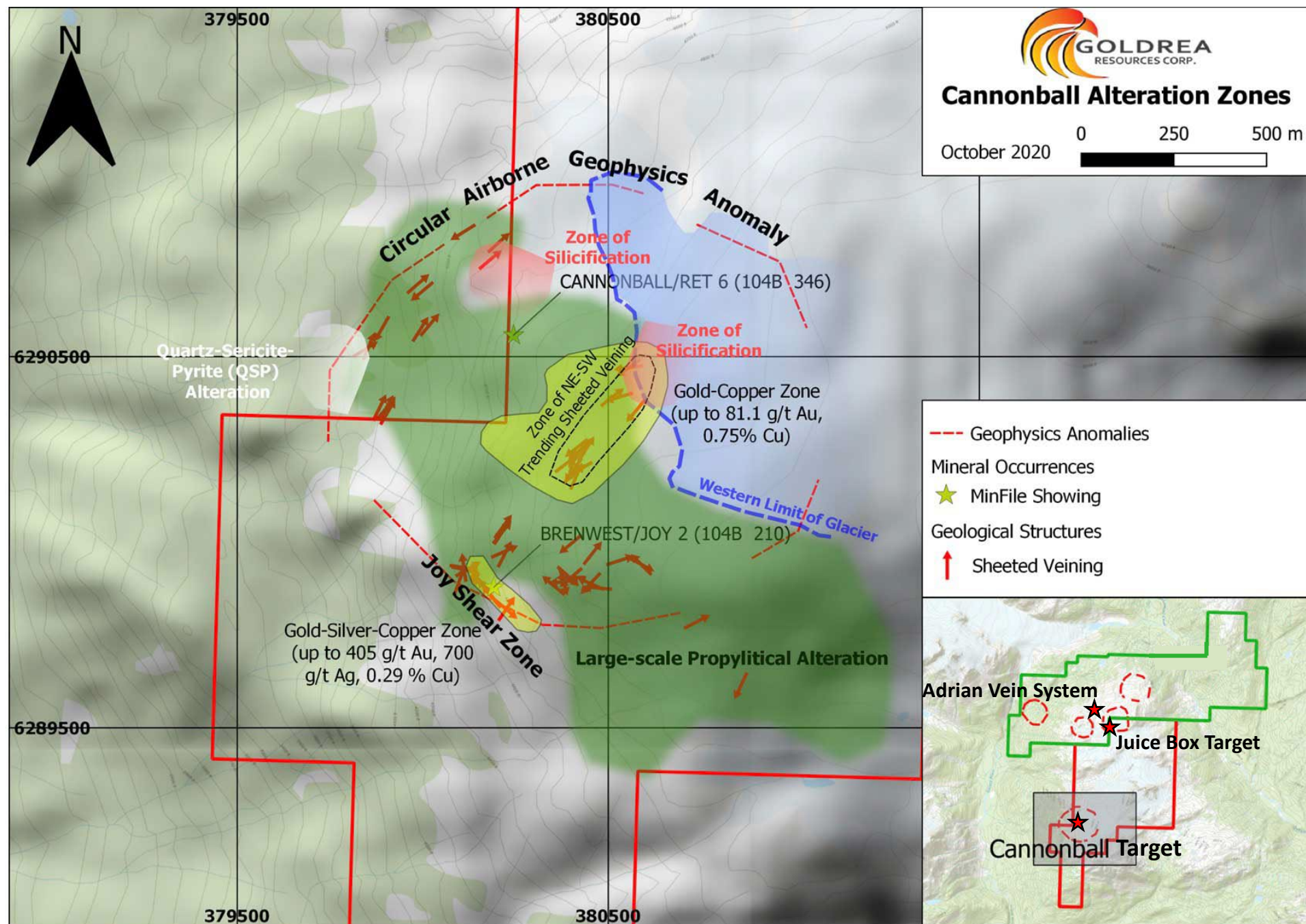


FIGURE 8: CANNONBALL TARGET GEOLOGY MAP (reference Goldrea press release dated October 21, 2020)

EXPERINCED TEAM



Jim Elbert – President & CEO, Director

Jim has steered Goldrea since 2012 after many years associated with financing and advising the Company. After attending Ohio State University in Business Administration, Jim founded and built a regional construction company in Arkansas. In 1992, he moved to B.C. and worked as an investment advisor in the brokerage industry for eleven years. Previous to joining Goldrea as CEO, Jim worked as consultant for several junior mining companies based in Canada and raised capital for numerous projects

John Abu-ulba – Director

John as over 20 years of executive experience managing corporate operations, with a focus on marketing, branding, and product development. John is currently the President of NutraNet Consulting Ltd., a network brokering company that specializes in connecting people and businesses.

Allan Eratie – Director

Allan has 25 years in engineering and construction on some of Canada's largest projects including Nexen's Long Lake, Syncrude's Aurora Mine relocation, and Conoco Philips Surmont 1. He has extensive knowledge of small cap markets and a wide circle of investors

Carl von Einsiedel, P.Geo – QP & Exploration Manager

Carl is a Vancouver B.C. based consulting geologist with decades of experience as a project generator and exploration contractor in B.C. and Mexico. Goldrea purchased the Cannonball claims from Carl in July of 2016 and recently optioned the Adrian claims to enhance the size and scale of the projects potential.

